

Features

- For applications requiring fast advance under no load then slower speed under high load. The Hi/Lo pump optimizes the input horsepower required.
- Both the high pressure and low pressure gear sets supply flow until the factory set pressure (400psi standard) is achieved. Above the pressure setting, only the high pressure gear set supplies flow and the low pressure gear set flows across the relief valve. The high pressure is isolated from the low pressure by a check valve.
- Includes hose barb connection pipe on suction line.



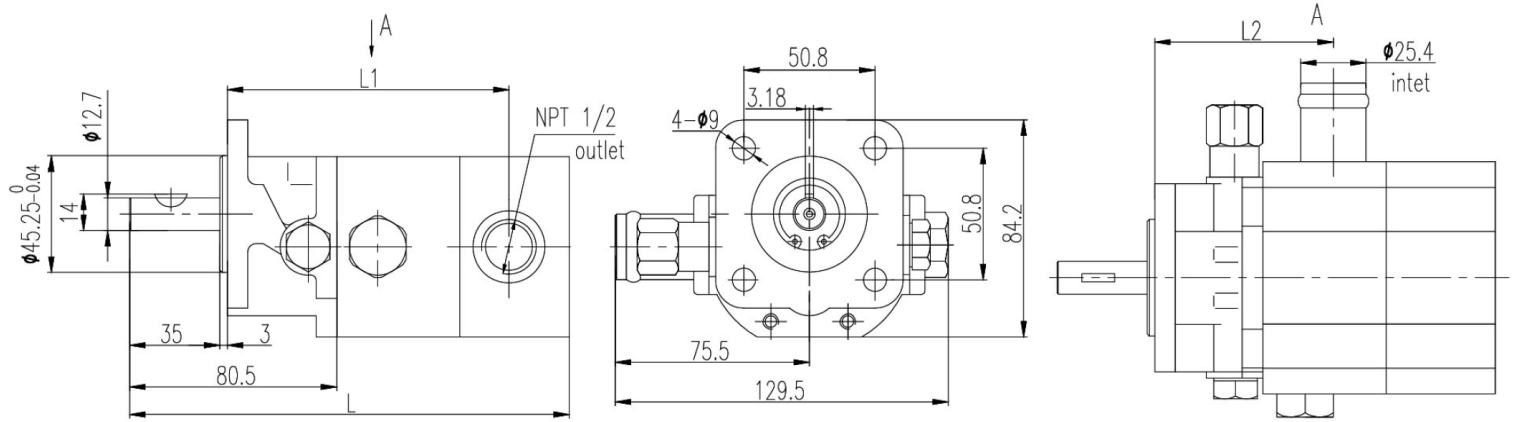
Ordering Details

| P | Pump | | | | | | | | | | | | | | | | | | | | | | | | | | |
|---------------|---|--|--------------------|-----------------|----------------------|----------------------|----------------------|--------------|--------------|----------------|--------------------|--------------------|------------|-----------------------|----------|-------|--------------|------------|-----------------------|----------|-------|--------------|--|---------|----------|--|--|
| F | Fixed | | | | | | | | | | | | | | | | | | | | | | | | | | |
| HL | Hi/Lo Gear | | | | | | | | | | | | | | | | | | | | | | | | | | |
| 6.3/2.1- | CC, Centimeters ³ /rev.: | Low/High : | | | | | | | | | | | | | | | | | | | | | | | | | |
| | | <table border="1"> <thead> <tr> <th colspan="4">Frame Size 1</th> <th>Frame Size 2</th> </tr> </thead> <tbody> <tr> <td>6.3/2.1</td> <td>8.8/2.1</td> <td>10.9/2.1</td> <td>13.0/4.2</td> <td>15.2/7.6</td> </tr> <tr> <td>6.3/3.0</td> <td>8.8/3.0</td> <td>10.9/3.0</td> <td></td> <td>22.9/7.6</td> </tr> <tr> <td>6.3/3.6</td> <td>8.8/3.6</td> <td>10.9/3.6</td> <td></td> <td></td> </tr> <tr> <td></td> <td>8.8/4.2</td> <td>10.9/4.2</td> <td></td> <td></td> </tr> </tbody> </table> | Frame Size 1 | | | | Frame Size 2 | 6.3/2.1 | 8.8/2.1 | 10.9/2.1 | 13.0/4.2 | 15.2/7.6 | 6.3/3.0 | 8.8/3.0 | 10.9/3.0 | | 22.9/7.6 | 6.3/3.6 | 8.8/3.6 | 10.9/3.6 | | | | 8.8/4.2 | 10.9/4.2 | | |
| | | Frame Size 1 | | | | Frame Size 2 | | | | | | | | | | | | | | | | | | | | | |
| | | 6.3/2.1 | 8.8/2.1 | 10.9/2.1 | 13.0/4.2 | 15.2/7.6 | | | | | | | | | | | | | | | | | | | | | |
| | | 6.3/3.0 | 8.8/3.0 | 10.9/3.0 | | 22.9/7.6 | | | | | | | | | | | | | | | | | | | | | |
| 6.3/3.6 | 8.8/3.6 | 10.9/3.6 | | | | | | | | | | | | | | | | | | | | | | | | | |
| | 8.8/4.2 | 10.9/4.2 | | | | | | | | | | | | | | | | | | | | | | | | | |
| W.5- | Shaft Style: | Keyed: | | | | | | | | | | | | | | | | | | | | | | | | | |
| | | <table border="1"> <thead> <tr> <th>Code</th> <th>Type</th> <th>Shaft Dia., in.</th> <th>Key Width, in.</th> <th>CC/Rev. (Frame Size)</th> </tr> </thead> <tbody> <tr> <td>W.5</td> <td>Woodruff Key</td> <td>0.500</td> <td>0.125</td> <td>Frame Size 1</td> </tr> <tr> <td>K.5</td> <td>Parallel Straight Key</td> <td>0.500</td> <td>0.125</td> <td>Frame Size 1</td> </tr> <tr> <td>K.6</td> <td>Parallel Straight Key</td> <td>0.625</td> <td>0.187</td> <td>Frame Size 2</td> </tr> </tbody> </table> | Code | Type | Shaft Dia., in. | Key Width, in. | CC/Rev. (Frame Size) | W.5 | Woodruff Key | 0.500 | 0.125 | Frame Size 1 | K.5 | Parallel Straight Key | 0.500 | 0.125 | Frame Size 1 | K.6 | Parallel Straight Key | 0.625 | 0.187 | Frame Size 2 | | | | | |
| | | Code | Type | Shaft Dia., in. | Key Width, in. | CC/Rev. (Frame Size) | | | | | | | | | | | | | | | | | | | | | |
| | | W.5 | Woodruff Key | 0.500 | 0.125 | Frame Size 1 | | | | | | | | | | | | | | | | | | | | | |
| K.5 | Parallel Straight Key | 0.500 | 0.125 | Frame Size 1 | | | | | | | | | | | | | | | | | | | | | | | |
| K.6 | Parallel Straight Key | 0.625 | 0.187 | Frame Size 2 | | | | | | | | | | | | | | | | | | | | | | | |
| 4A0- | Mounting Flange | <table border="1"> <thead> <tr> <th>Code</th> <th>Description</th> <th>CC/rev</th> </tr> </thead> <tbody> <tr> <td>4A0</td> <td>4 Bolt, 4F17</td> <td>Frame Size 1</td> </tr> <tr> <td>2AA</td> <td>2 Bolt, SAE AA</td> <td>Frame Size 1 and 2</td> </tr> </tbody> </table> | Code | Description | CC/rev | 4A0 | 4 Bolt, 4F17 | Frame Size 1 | 2AA | 2 Bolt, SAE AA | Frame Size 1 and 2 | | | | | | | | | | | | | | | | |
| | | Code | Description | CC/rev | | | | | | | | | | | | | | | | | | | | | | | |
| | | 4A0 | 4 Bolt, 4F17 | Frame Size 1 | | | | | | | | | | | | | | | | | | | | | | | |
| 2AA | 2 Bolt, SAE AA | Frame Size 1 and 2 | | | | | | | | | | | | | | | | | | | | | | | | | |
| N.5 | Pressure Port: | <table border="1"> <thead> <tr> <th rowspan="2">Code</th> <th rowspan="2">Description</th> <th colspan="2">CC/Rev. (Frame Size)</th> </tr> <tr> <th>Pressure Port</th> <th>Suction Port</th> </tr> </thead> <tbody> <tr> <td>H1</td> <td>1" Hose Barb</td> <td></td> <td>Frame Size 1 and 2</td> </tr> </tbody> </table> | Code | Description | CC/Rev. (Frame Size) | | Pressure Port | Suction Port | H1 | 1" Hose Barb | | Frame Size 1 and 2 | | | | | | | | | | | | | | | |
| | | Code | | | Description | CC/Rev. (Frame Size) | | | | | | | | | | | | | | | | | | | | | |
| Pressure Port | Suction Port | | | | | | | | | | | | | | | | | | | | | | | | | | |
| H1 | 1" Hose Barb | | Frame Size 1 and 2 | | | | | | | | | | | | | | | | | | | | | | | | |
| H1 | Suction Port: | <table border="1"> <tbody> <tr> <td>N.5</td> <td>1/2" NPT</td> <td>Frame Size 1</td> <td></td> </tr> <tr> <td>N.75</td> <td>3/4" NPT</td> <td>Frame Size 2</td> <td></td> </tr> </tbody> </table> | N.5 | 1/2" NPT | Frame Size 1 | | N.75 | 3/4" NPT | Frame Size 2 | | | | | | | | | | | | | | | | | | |
| | | N.5 | 1/2" NPT | Frame Size 1 | | | | | | | | | | | | | | | | | | | | | | | |
| N.75 | 3/4" NPT | Frame Size 2 | | | | | | | | | | | | | | | | | | | | | | | | | |
| S- | Ports: S=Side | | | | | | | | | | | | | | | | | | | | | | | | | | |
| R- | Rotation when looking at the shaft: L=Left Hand (CCW), R= Right Hand (CW) | | | | | | | | | | | | | | | | | | | | | | | | | | |
| 400- | Low to high pressure transition setting, indicate other pressure if required, 400 = 400PSI (standard) | | | | | | | | | | | | | | | | | | | | | | | | | | |
| 9 | Series | | | | | | | | | | | | | | | | | | | | | | | | | | |

Example Part Number: PFHL6.3/2.1-W.5-4A0-N.5H1S-R-400-9

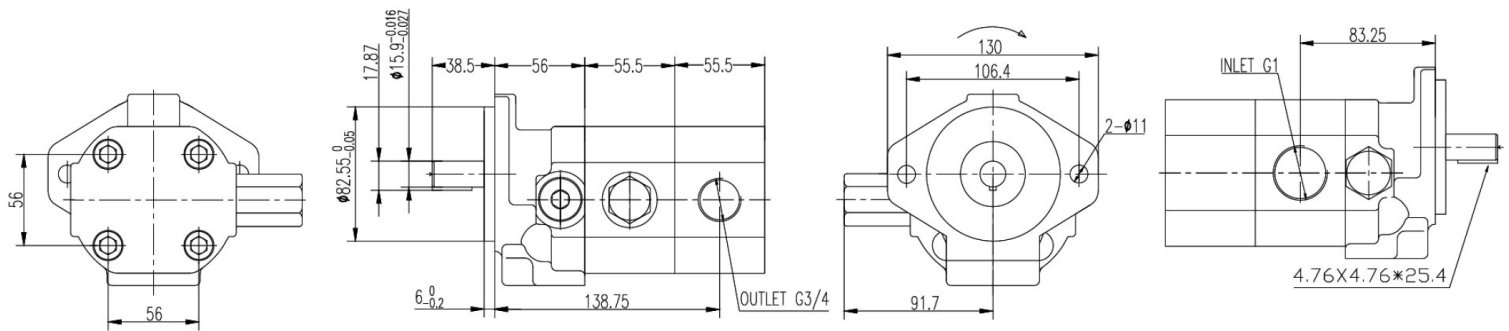
Section 1 – Technical Data and Dimensional Data

Frame Size 1, 6.3 to 13 cc/rev:



| Displacement cc/rev Low/High | Max. continuous pressure PSI (bar) | Max. continuous speed r/min | Flow at 1800rpm GPM | | Max. horsepower required at 1800rpm, 3000PSI | L mm | L ₁ mm | L ₂ mm | Pressure Port | Suction Port |
|------------------------------------|---|--------------------------------------|------------------------|------|--|---------|----------------------|----------------------|------------------|-----------------|
| | | | Lo | High | | | | | | |
| 6.3/2.1 | 3000 (210) | 3600 | 4.0 | 1.0 | 2.2 | 6.07 | 3.74 | 2.41 | 1/2" NPT | 1" Hose Barb |
| 6.3/3.0 | 3000 (210) | 3600 | 4.4 | 1.4 | 3.1 | 6.21 | 3.90 | 2.41 | 1/2" NPT | 1" Hose Barb |
| 6.3/3.6 | 3000 (210) | 3600 | 4.7 | 1.7 | 3.7 | 6.28 | 3.90 | 2.74 | 1/2" NPT | 1" Hose Barb |
| 8.8/2.1 | 3000 (210) | 3600 | 5.2 | 1.0 | 2.2 | 6.41 | 4.08 | 2.74 | 1/2" NPT | 1" Hose Barb |
| 8.8/3.0 | 3000 (210) | 3600 | 5.6 | 1.4 | 3.1 | 6.54 | 4.08 | 2.74 | 1/2" NPT | 1" Hose Barb |
| 8.8/3.6 | 3000 (210) | 3600 | 5.9 | 1.7 | 3.7 | 6.61 | 4.24 | 2.74 | 1/2" NPT | 1" Hose Barb |
| 8.8/4.2 | 3000 (210) | 3600 | 6.2 | 2.0 | 4.4 | 6.70 | 4.24 | 2.74 | 1/2" NPT | 1" Hose Barb |
| 10.9/2.1 | 3000 (210) | 3600 | 6.2 | 1.0 | 2.2 | 6.70 | 4.37 | 3.04 | 1/2" NPT | 1" Hose Barb |
| 10.9/3.0 | 3000 (210) | 3600 | 6.6 | 1.4 | 3.1 | 6.90 | 6.90 | 3.04 | 1/2" NPT | 1" Hose Barb |
| 10.9/3.6 | 3000 (210) | 3600 | 6.9 | 1.7 | 3.7 | 6.90 | 6.90 | 3.04 | 1/2" NPT | 1" Hose Barb |
| 10.9/4.2 | 3000 (210) | 3600 | 7.2 | 2.0 | 4.4 | 6.90 | 6.90 | 3.04 | 1/2" NPT | 1" Hose Barb |
| 13.0/4.2 | 3000 (210) | 3600 | 7.2 | 2.0 | 4.4 | 6.90 | 6.90 | 3.04 | 1/2" NPT | 1" Hose Barb |

Frame Size 2, 15.2– 12.9 cc/rev:



| Displacement cc/rev Low/High | Max. continuous pressure PSI (bar) | Max. continuous speed r/min | Flow at 1800rpm GPM | | Max. horsepower required at 1800rpm, 3000PSI | Pressure Port | Suction Port |
|------------------------------------|---|--------------------------------------|------------------------|------|--|------------------|-----------------|
| | | | Lo | High | | | |
| 15.2/7.6 | 3000 (210) | 3600 | 7.2 | 3.6 | 7.9 | 3/4" NPT | 1" Hose Barb |
| 22.9/7.6 | 3000 (210) | 3600 | 10.8 | 3.6 | 7.9 | 3/4" NPT | 1" Hose Barb |